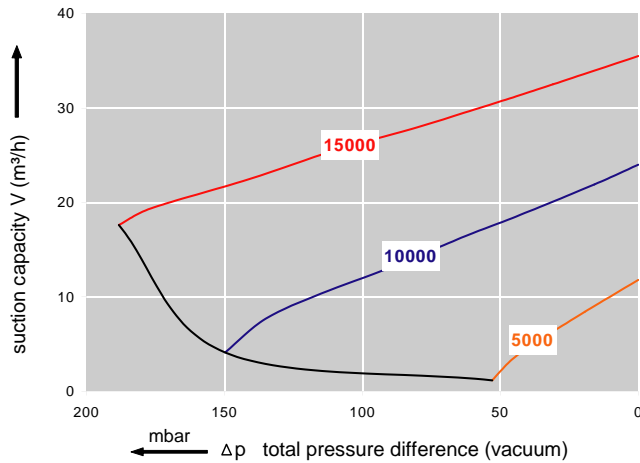




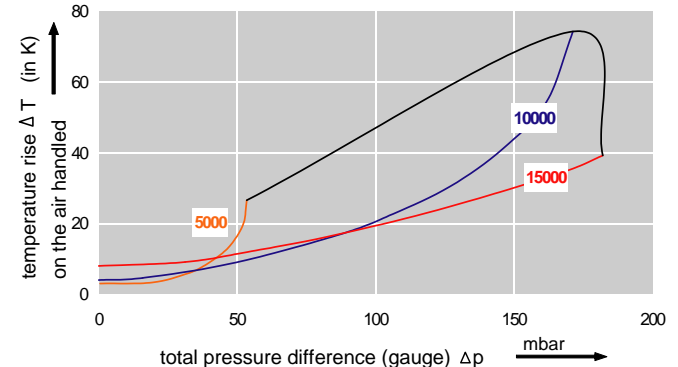
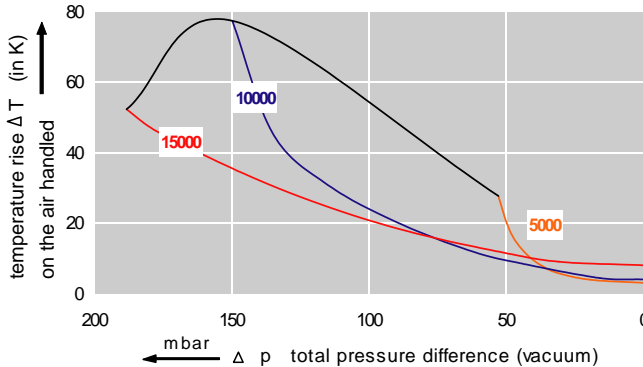
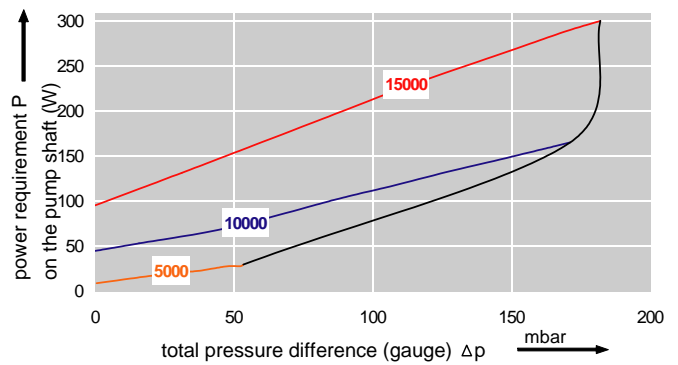
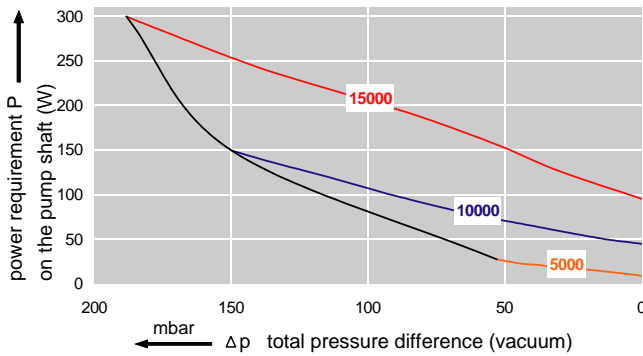
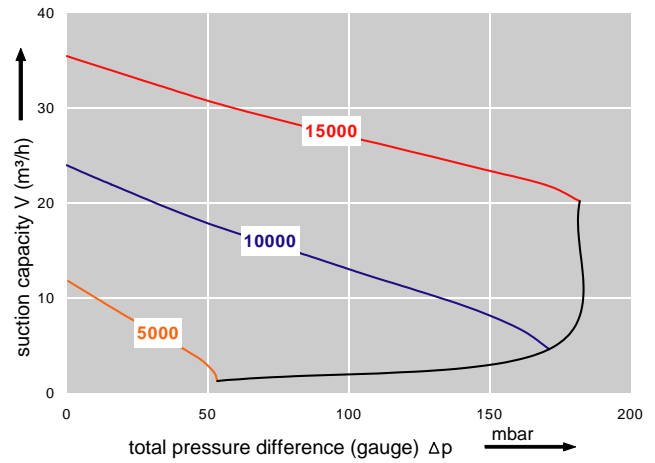
Features:

- Cooler running, outboard bearing provides maintenance-free operation
- Environmentally friendly oil-free technology
- Extremely quiet operation
- All motors are standard brushless DC motors, CE compliant
- Custom construction blowers are available
- Rugged die cast aluminum construction

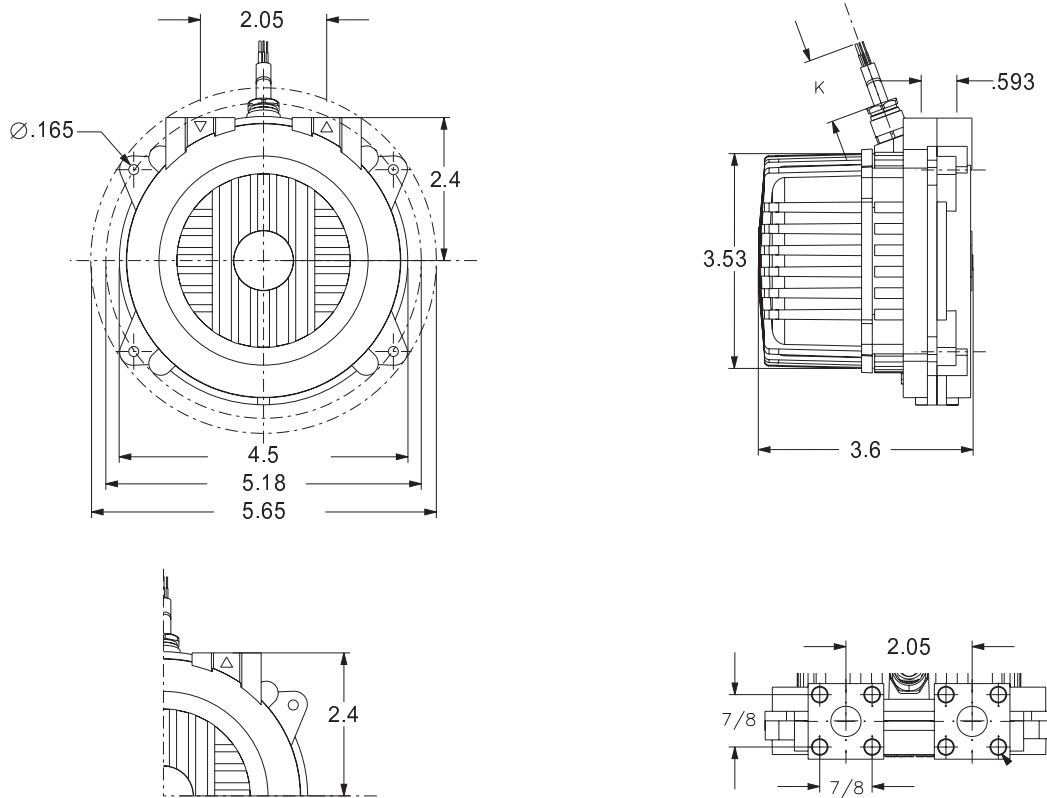
Performance curve for Vacuum pump



Performance curve for Compressor



Dimensions: (inches)



Specifications subject to change without notice. Please contact factory for specification updates.

Selection & Ordering Data - Type 3BA1002

Order No.	electronics	Connection	Control voltage	Speed	max. Output power	Input current	Input voltage	Sound pressure level	Weight Gas ring blowers	ext. electronic
			V	rpm	W	A	V	dB(A)	lbs.	lbs
3BA1002-AB52	external (provided)	flange connection	0-10		300	14	24	55	3.3	-
3BA1002-BB52	external (provided)	flange connection	0-10		300	7	48	55	3.3	-
			10.0	15000						
			7.1	10000						
			5.1	7000						
			3.0	5000						

All curves are rated at 14.7 psia and 68° F ambient conditions and are reported in SCFM referenced to 68° F and 14.696 psia sea level conditions. Curve values are nominal, actual performance may vary by up to 10% of the values indicated. For inlet temperatures above approximately 80° F or for handling gases other than air, please contact your Airtech sales representative for assistance.